

[APPE] ADVANCED PHARMACY PRACTICE EXPERIENCES

How can the APPE program benefit you?

All UCSF APPE program will prepare you for your next steps in your pharmacy career. Students from each program obtain residencies, fellowships, and desired job opportunities. Success comes from your motivation to learn and build your skills in any environment you are assigned.

What do all APPE sites share?

- Each program uses **Kaiser Permanente** as a major APPE site, usually across several locations. **Veterans Affairs Facilities** are another major APPE site (except for North Bay).
- Students often choose the program that allows them to live close to family and supportive communities.
- Each program offers diverse electives, faculty and preceptor mentorship.
- Accessing student health services may be challenging for all of the off-campus programs.

North Bay

Program Director:
Kirsten Balano



of APPE students



Major APPE sites

- Sutter Santa Rosa Regional Medical Center
- Santa Rosa Community Health Centers
- Santa Rosa Memorial Hospital
- Marin General Hospital
- North Bay Health Care Fairfield

Greater Sacramento

Program Director:
Tiffany Pon

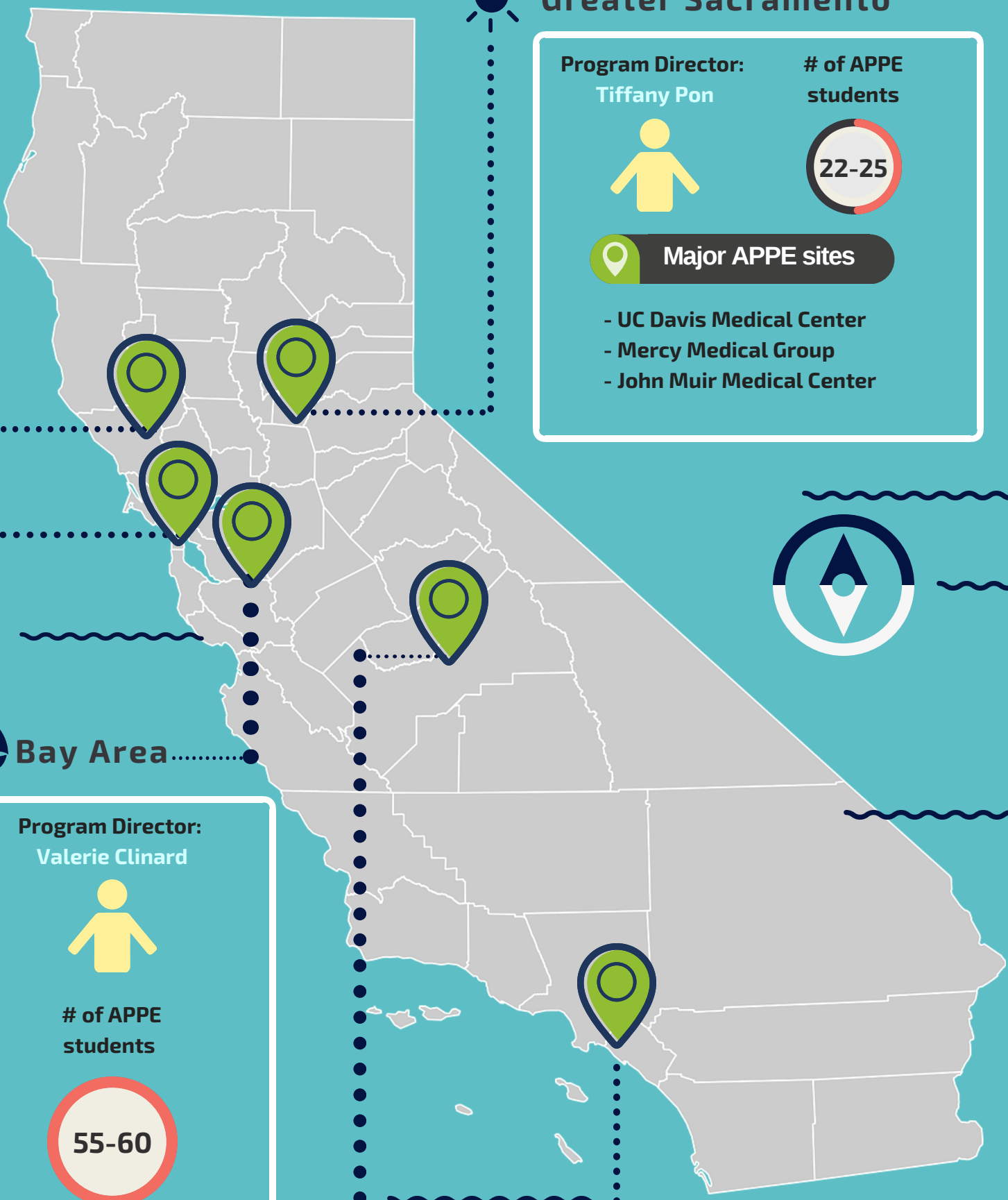


of APPE students



Major APPE sites

- UC Davis Medical Center
- Mercy Medical Group
- John Muir Medical Center



Program Director:
Valerie Clinard



of APPE students



Major APPE sites

- UCSF Medical Center
- Zuckerberg San Francisco General
- Stanford Health
- Lucile Packard
- Walgreens

Fresno

Program Director:
Mitra Assemi



of APPE students



Major APPE sites

- Community Medical Centers
- Kaweah Delta Health Care District
- Valley Children's Hospital (including Walgreens)

Los Angeles/Orange County

Program Director:
Robin Corelli



of APPE students



Major APPE sites

- Cedars-Sinai Medical Center
- UC Irvine Medical Center
- Long Beach Memorial Medical Center
- Ralphs



- Number of students is tentative
- List of APPE sites is not comprehensive; consult the site CLE webpage