

Spleen injection

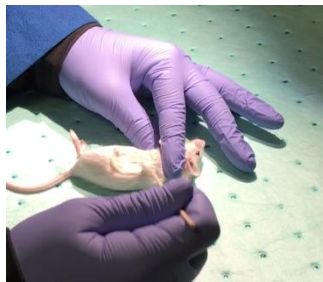
Xinhua Song
Dec 2020

1. Cell Preparation

Resuspend cultured tumor cells in phosphate buffered saline at 2×10^7 cells/ml, and keep on ice.

2. Mouse Preparation

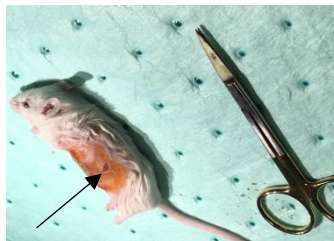
- Anesthetize the mice.
- Apply Puralube Vet Ointment to the eyes of the mice to prevent drying while the mice are under anesthesia.
- Shave the surgical area of the mice to avoid contamination of the wound.(Or use hair remover cream)



- Prep the left subcostal area of the incision with 70% ethanol and then iodine.



- Make a tiny incision in the skin (do not cut peritoneum) above the spleen.

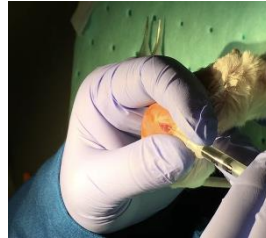


3. Tumor Injection

- Transfer tumor cells (5×10^5 - 2×10^6) into insulin syringe by 200ul tips. (It may damage cells if you draw up cells directly using needles) Then draw up a little bit

food coloring marker.

- Inject the cells slowly into spleen. (Fix the spleen firmly)



4. Skin Closure and Recovery from Anesthesia

- Close the skin with a 4-0 running stitch.
- Administer 0.1 mg/kg buprenorphine or 5-10 mg/kg Carprofen subcutaneously to alleviate post surgical pain.
- Sterilize by iodine.
- Place the mouse on a heating pad for recovery.

